

# CAPABILITY STATEMENT

## BUSINESS PROCESS CONSULTING SERVICES

### About LifeSpann Insights

LifeSpann Insights, LLC delivers operational support to entrepreneurs, creatives, and small business owners. Passionate about optimizing workflows and driving efficiency, LifeSpann specializes in process optimization and strategic workflow improvements, delivering streamlined solutions that elevate productivity.

#### DIFFERENTIATORS

**Data-Driven Approach:** Leveraging solid data insights to make informed decisions and develop strategic plans.

**Comprehensive Solution**

**Development:** Formulating strategic plans, transform them into actionable tasks, and implement solutions effectively from ideation to completion.

**Continuous Improvement:**

Dedication to continuous improvement, remaining updated on industry trends, and leveraging lessons learned from challenges and successes.

**HR Expertise:**

Drawing from a background in HR Operations, I possess a well-rounded skill set that proves invaluable for gaining insights and developing strategic solutions.



Courtney Spann, Owner



courtney@lifespaininsights.com

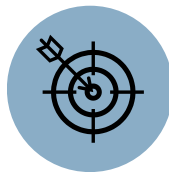


<https://lifespaininsights.com>



Simpsonville, South Carolina  
29680

### CORE COMPETENCIES



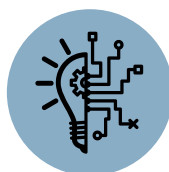
#### DATA & WORKFLOW ANALYSIS

- Assessments, data audits & trend analysis
- Identifying patterns, discrepancies, and areas for improvement



#### STRATEGIC PLANNING

- Formulating comprehensive strategies & transforming them into actionable tasks with clear & quantifiable objectives
- Identifying & implementing appropriate tools to support initiatives



#### PROCESS OPTIMIZATION

- Developing procedures & materials for effective documentation
- Ensuring team alignment for effective implementation



#### CONTINUOUS IMPROVEMENT

- Monitoring progress & addressing challenges
- Assessing outcomes of implemented strategies & incorporating lessons learned into future strategies